

One Daytona Blvd.
Daytona Beach, FL 32114
P: +1 (386) 310-6500

IMSA TECHNICAL BULLETIN IWSC #17-03

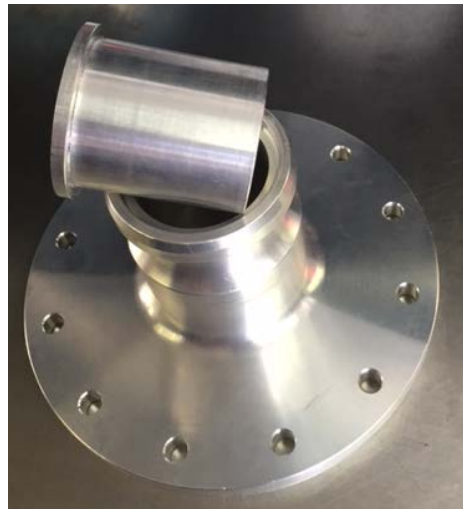
To: All IMSA WeatherTech SportsCar Championship Competitors
From: IMSA Competition
Date: 2 December 2016
Re: Autonomous Fuel Supply Tank Updates

IMSA continues to make improvements and refinements to its data collection capability, with the goal of maintaining competitive equivalency between Cars within each class by the process of standardization and accuracy of measurement.

Effective starting at the 2017 Roar event, the autonomous fuel supply tanks for all P, PC, GTLM, and GTD Competitors must be updated with new hardware which will include the following components.

Tank Hardware:

Restrictor Housing	BSR-FR FN40 Bottom Tank 12-bolt housing
12-Bolt Gasket	ATL-TF 147
Bottom 80 deg. Elbow	BSR-FR 1981 Female Camlock x 2" Male
Deadman Valve	BSR-FR R003 Stainless Deadman Valve
Adapter	BSR-P5K56 Adapter 2" Male to 1 ½" Camlock
Also available:	
Individual Restrictors	BSR-FR-Rxx (xx indicates restrictor size in mm)



These components are only available from RPXpress and must not be modified.

For cost and ordering information, please call +1 828-428-0820

IMSA sensor package and wiring loom:

All P, GTLM, and GTD Competitors Autonomous Fuel Supply Tank must be fitted with an IMSA sensor package and wiring loom which provides IMSA with the capability to collect data on each cars refueling in real time, and will enable IMSA to provide each individual team with its respective fill time and volume data.

The sensor package consists of a capacitive fluid level, fuel temperature, and vent pressure sensors integrated into a single housing. The sensor package and wiring loom is only available for purchase from IMSA as an Accessory and will be distributed at the beginning of the Roar event.

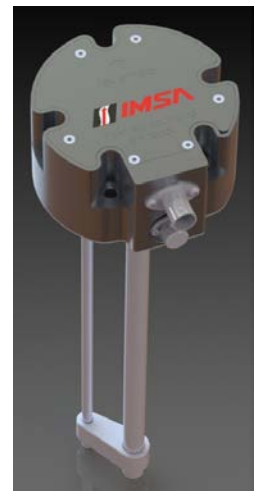
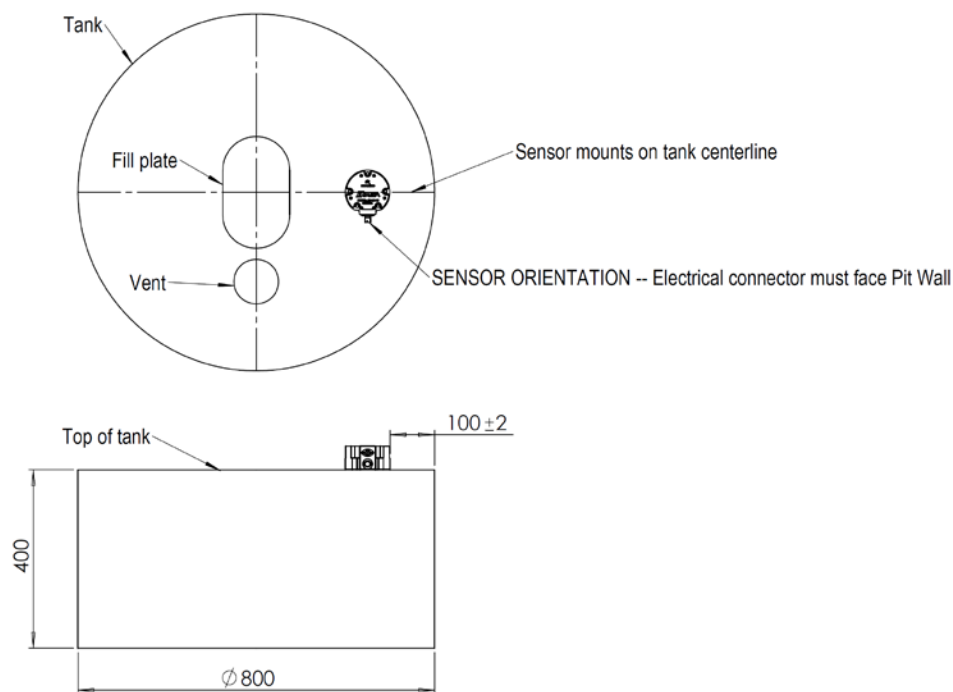
Only IMSA certified wiring looms are permitted. The wiring loom connects the sensor package to a dedicated port on the IMSA pit-lane network box. Competitors must connect the loom to a specific pit-lane network box designated by IMSA at each event. Competitors are responsible for connecting the loom at the beginning of each event and for proper removal at the conclusion of the event. Replacement wiring looms are available for purchase.

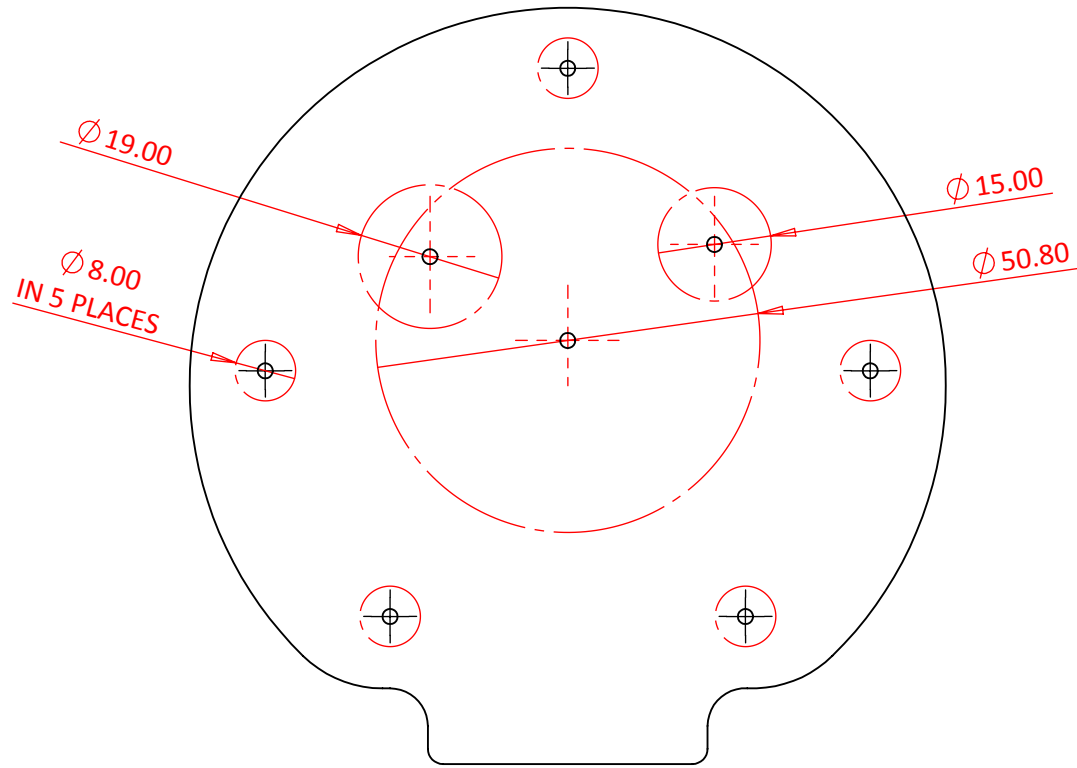
Sensor packages are serialized and are issued to a unique Competitor. Sensors must not be exchanged between Competitors without prior written approval from IMSA. Sensor package kits include the sensor package, gasket, nut plate, and all other hardware required to install the sensor in the tank.

Consistent with all other required scrutineering data logger components, it is the responsibility of the Competitor to ensure the sensor package and associated wiring is operational at all times.

Attached to this bulletin are drilling templates and other dimensioned drawings that will assist in the modification of the tanks to accommodate the sensor package installation. Sensor packages must be installed in the location and orientation indicated in this bulletin. Modification of the sensor package and wiring loom is not permitted.

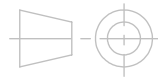
Sensor Package Placement and Orientation:





UNLESS OTHERWISE SPECIFIED: DIMENSIONS ARE IN MILLIMETERS SURFACE FINISH: TOLERANCES: LINEAR: ± 0.05 ANGULAR: ± 0.05		FINISH: M/C		DEBUR AND BREAK SHARP EDGES		REVISION ISSUE	DESCRIPTION	DATE	APPROVED
						01	FIRST RELEASE	27.10.16	NJM
						02	NEW PROFILE	07.11.16	NJM
						03	PRODUCTION RELEASE	14.11.16	NJM
						TITLE:			
						MOUNTING BOSS DRILLING TEMPLATE			
						DWG NO.		A4	
						SCALE: 1:1		SHEET 1 OF 1	

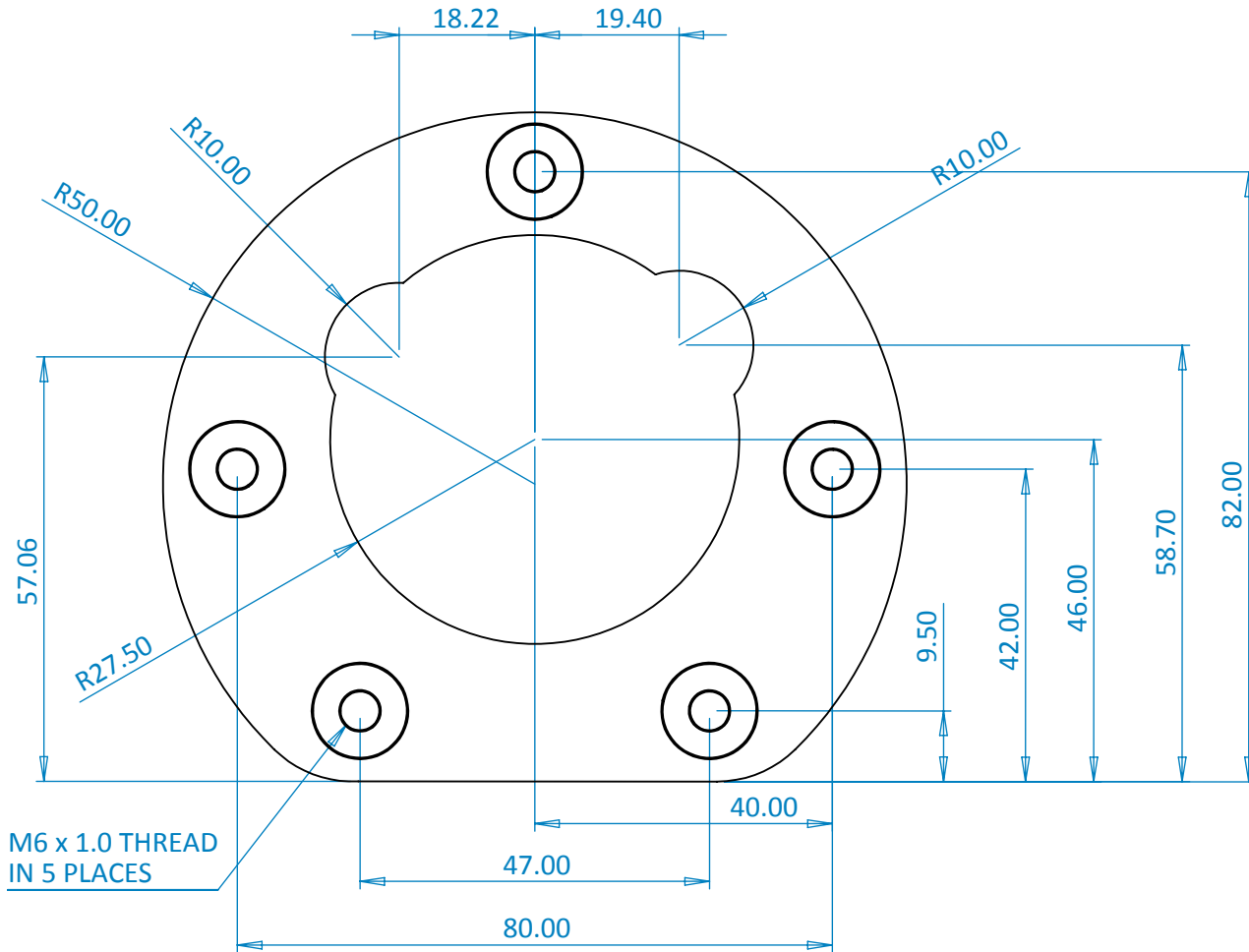
	NAME	SIGNATURE	DATE
DRAWN	NJM		27.10.16
CHK'D			
APPV'D			
MFG			
Q.A			



THIRD ANGLE

© DESIGN COPYRIGHT RESERVED
reventec
 Reventec Ltd
 Unit 38, Downton Business Centre
 Salisbury
 Wiltshire
 SP4 3HU
 TEL: +44(0)1725 513388
 FAX: +44(0)1725 513399
 Email: info@reventec.com
 Website: www.reventec.com

MATERIAL:
N/A
WEIGHT:



M6 x 1.0 THREAD
IN 5 PLACES

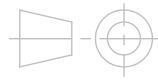
UNLESS OTHERWISE SPECIFIED:
DIMENSIONS ARE IN MILLIMETERS
SURFACE FINISH:
TOLERANCES:
LINEAR: ± 0.05
ANGULAR: ± 0.05

FINISH: M/C

DEBUR AND
BREAK SHARP
EDGES

REVISION ISSUE	DESCRIPTION	DATE	APPROVED
04	FIRST RELEASE	15.11.16	NJM

	NAME	SIGNATURE	DATE
DRAWN	NJM		15.11.16
CHK'D			
APPV'D			
MFG			
Q.A			



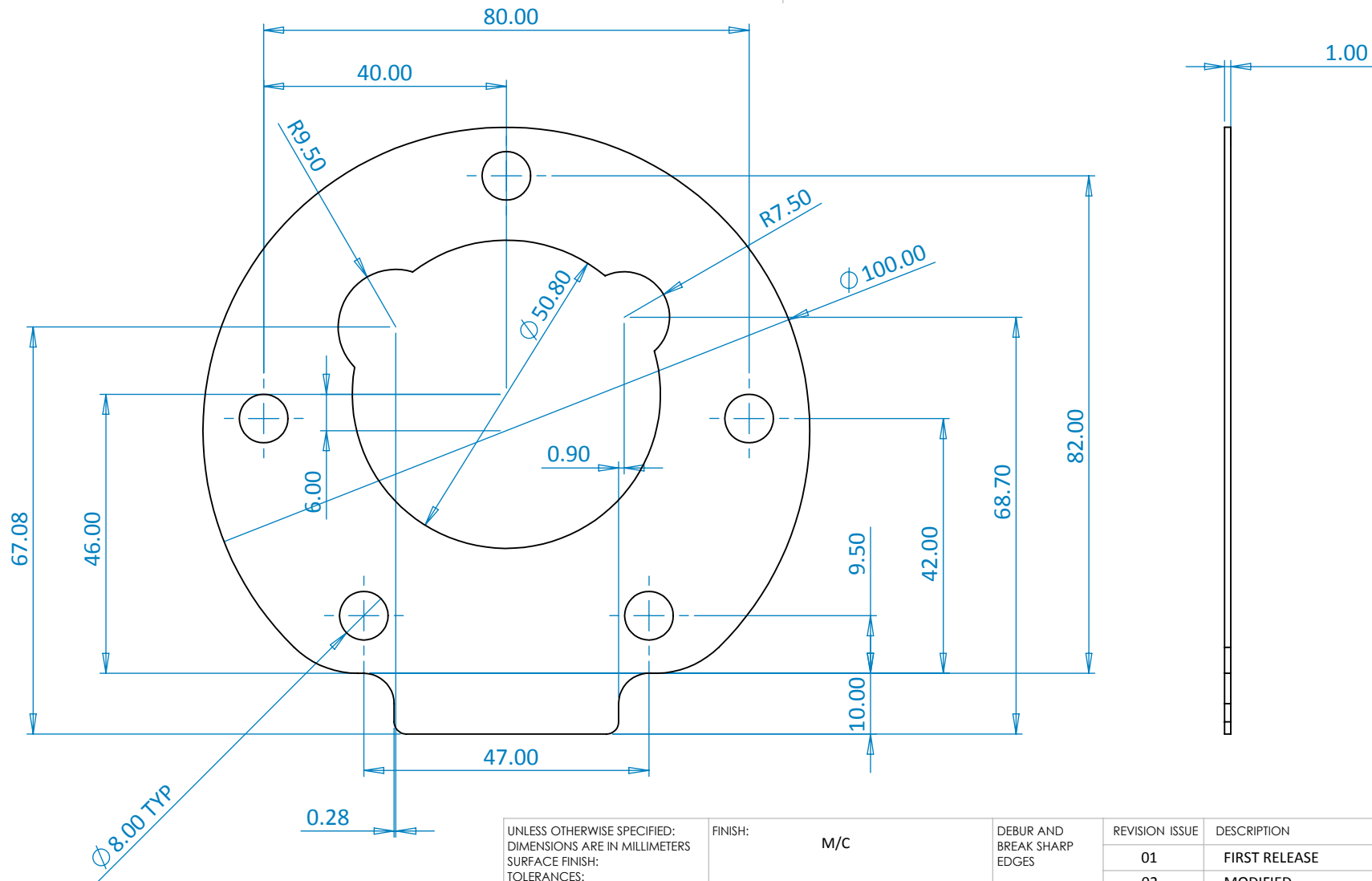
THIRD ANGLE

TITLE:
IMSA PIT TANK NUT RING ASSEMBLY

© DESIGN COPYRIGHT RESERVED
Reventec Ltd
Unit 38, Downton Business Centre
Salisbury
Wiltshire
SP4 3HU
TEL: +44(0)1725 513388
FAX: +44(0)1725 513399
Email: info@reventec.com
Website: www.reventec.com

MATERIAL:
ALLOY & ZINC
WEIGHT:

DWG NO. **EC-016-04** **A4**
SCALE: 1:1 SHEET 1 OF 1

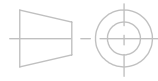


UNLESS OTHERWISE SPECIFIED:
 DIMENSIONS ARE IN MILLIMETERS
 SURFACE FINISH:
 TOLERANCES:
 LINEAR: ± 0.05
 ANGULAR: ± 0.05

FINISH: M/C
 DEBUR AND BREAK SHARP EDGES

REVISION ISSUE	DESCRIPTION	DATE	APPROVED
01	FIRST RELEASE	27.10.16	NJM
02	MODIFIED	07.11.16	NJM
03	ADDED RELIEF FOR TEMPERATURE & PRESSURE SENSORS	14.11.16	NJM

	NAME	SIGNATURE	DATE
DRAWN	NJM		27.10.16
CHK'D			
APPV'D			
MFG			
Q.A			



THIRD ANGLE

TITLE:
MOUNTING BOSS SEAL



MATERIAL:
FLUOROCARBON
 WEIGHT:

DWG NO. **EC-006-03**
 SCALE: 1:1
 SHEET 1 OF 1